

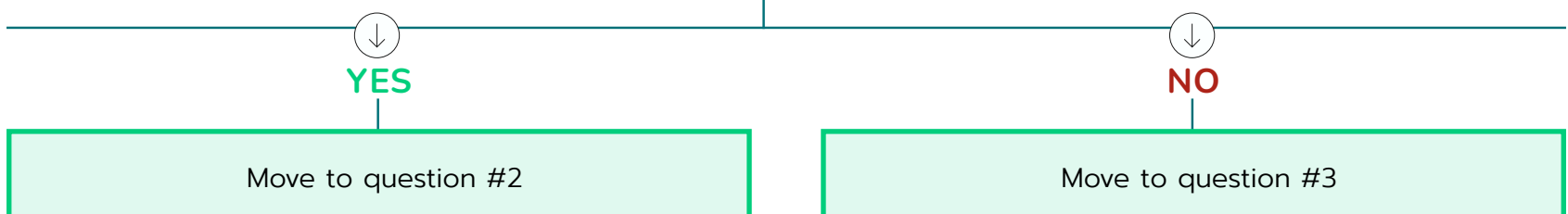
# SINGLE-USE PRODUCTS AND PACKAGING DECISION TREE

Before deciding to switch to an alternative single-use product/ packaging, determine the following:

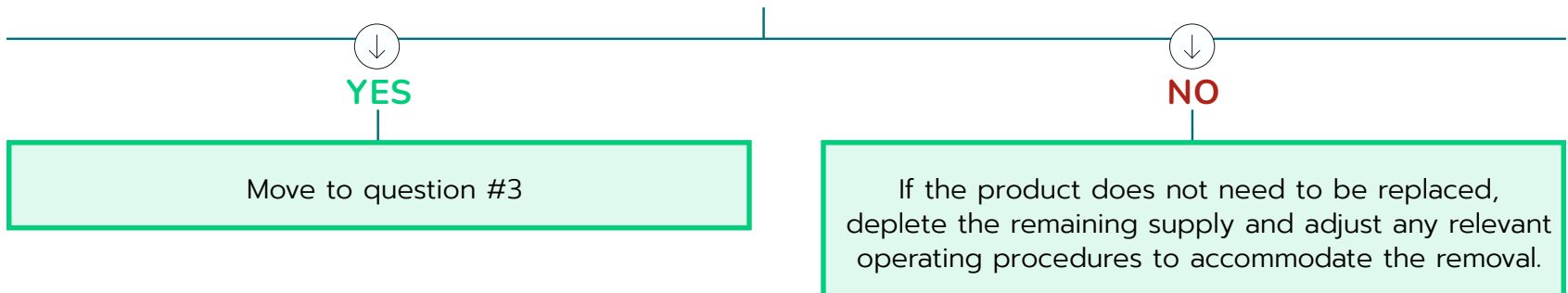
1. What are the most prevalent materials used for the single-use products/packaging in your operations? (plastic, paper, metal, other)
2. Are there any state/local public policies related to single-use products/packaging that the hotel must comply [with](#)?
3. Coordinate with the waste management service provider that is currently contracted for the hotel or other potential service providers that may be able to service the hotel to determine the following (to the right):

- What services does the provider offer? (e.g. recycling, commercial composting)
- What materials/products does the provider collect? (plastic, paper, metal, other)
- What standards must products meet to qualify for collection? (e.g. products may need to be free from any food residue to qualify for recycling; bottle caps must be removed from or kept on plastic bottles)
- Is there adequate space inside and outside of the hotel to facilitate collection?

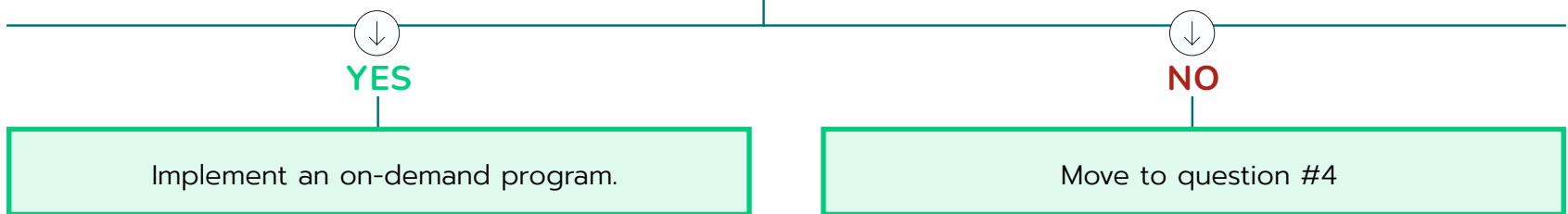
## 1. CAN THE PRODUCT BE REMOVED FROM HOTEL OPERATIONS WITHOUT IMPACTING THE GUEST EXPERIENCE?



## 2. DOES THE PRODUCT NEED TO BE REPLACED WITH SOMETHING ELSE TO FULFILL OPERATIONAL NEEDS OR CAN IT BE COMPLETELY REMOVED?



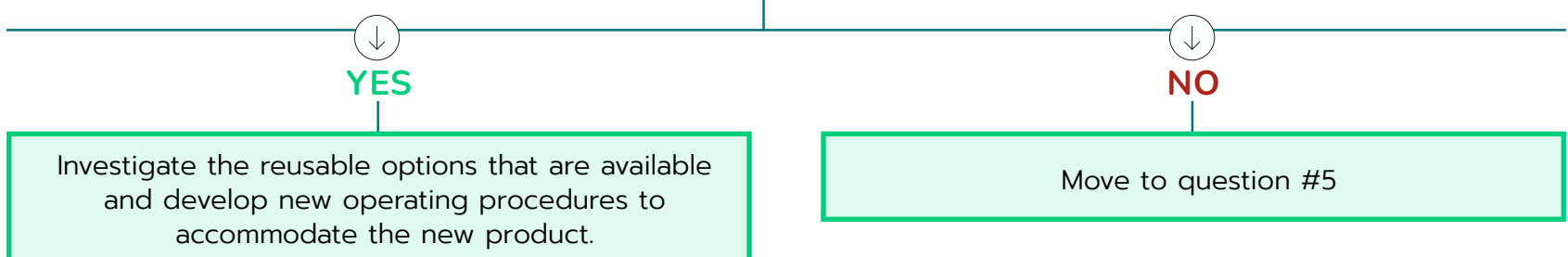
## 3. CAN THE PRODUCT BE PUT ON-DEMAND?



### Helpful Tip

Depending on guest demand, some brands may consider completely removing certain products such as dental and shaving kits. These items can also be separated into individual items and shifted to on-demand to reduce unnecessary waste.

## 4. CAN THE PRODUCT BE SWITCHED TO A REUSABLE OPTION?



**5. BASED ON THE WASTE MANAGEMENT SERVICES AVAILABLE, REVIEW OTHER SINGLE-USE PRODUCTS/PACKAGING THAT MAY BE MORE SUSTAINABLE. PRODUCTS/PACKAGING WITH THIRD-PARTY SUSTAINABILITY CERTIFICATIONS ARE HIGHLY RECOMMENDED; HOWEVER, HOTELS CAN WORK WITH SUPPLIERS TO UNDERSTAND THEIR BROADER SUSTAINABILITY PRACTICES AND COMMITMENTS.**

**a. If recycling is available**, choose alternative products that are commonly recycled in the U.S.:

- Food and non-food service bottles made from #1 and #2 plastics, aluminum cans, glass and cardboard with a minimum of 15-30% recycled content (if available) and a verified claim or certification for the recycled content.

**b. If commercial composting is available**, choose certified compostable/biodegradable products.\*

**c. If recycling or composting services are not available**, choose products with a minimum recycled and/or renewable content of 15-30% (if available) and a verified claim or certification for the recycled content, and/or have been lightweighted to reduce the amount of material used.

**Note:** A more sustainable product may not currently exist.

\*PHA and PLA products should only be purchased if commercial composting is available.